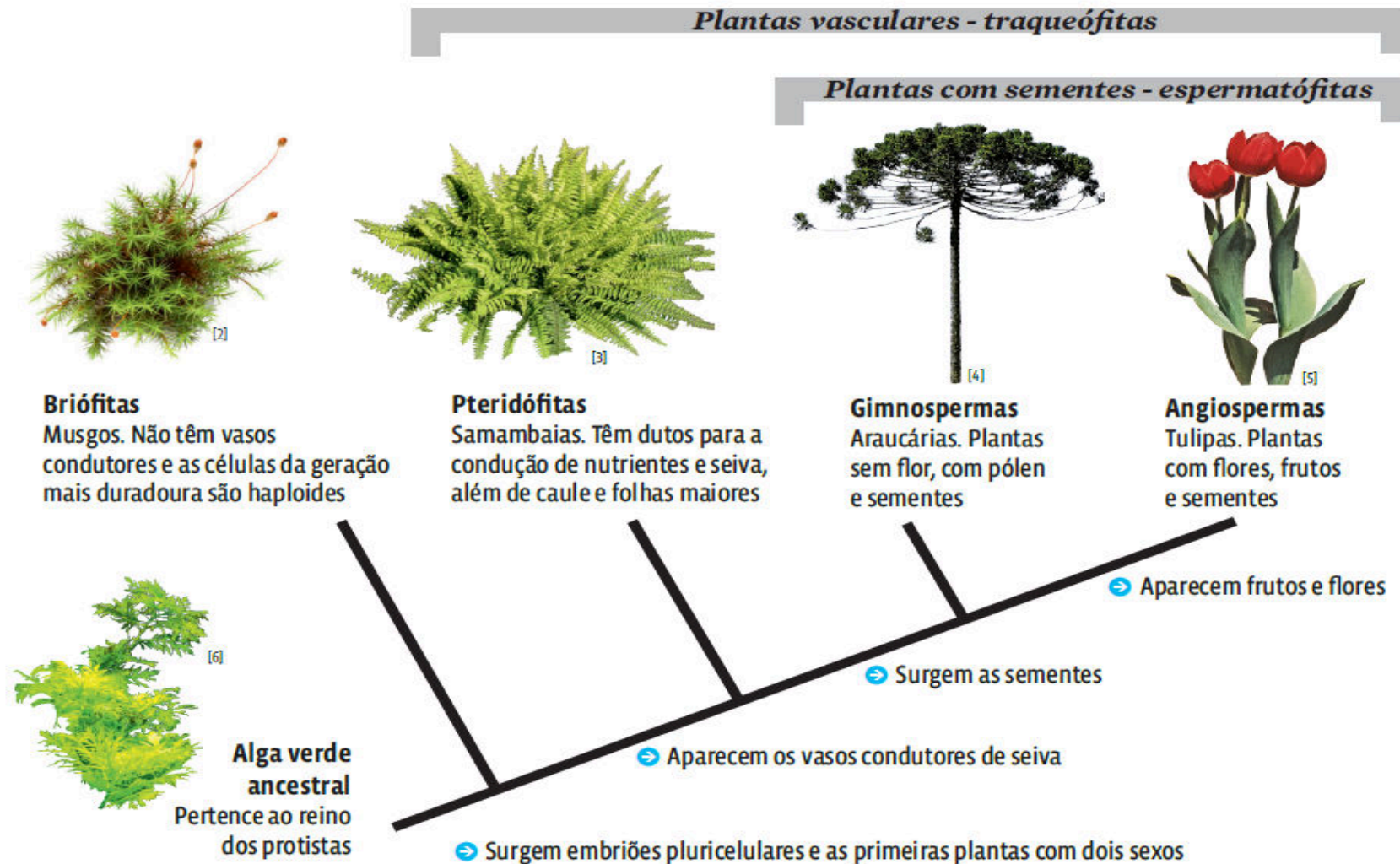
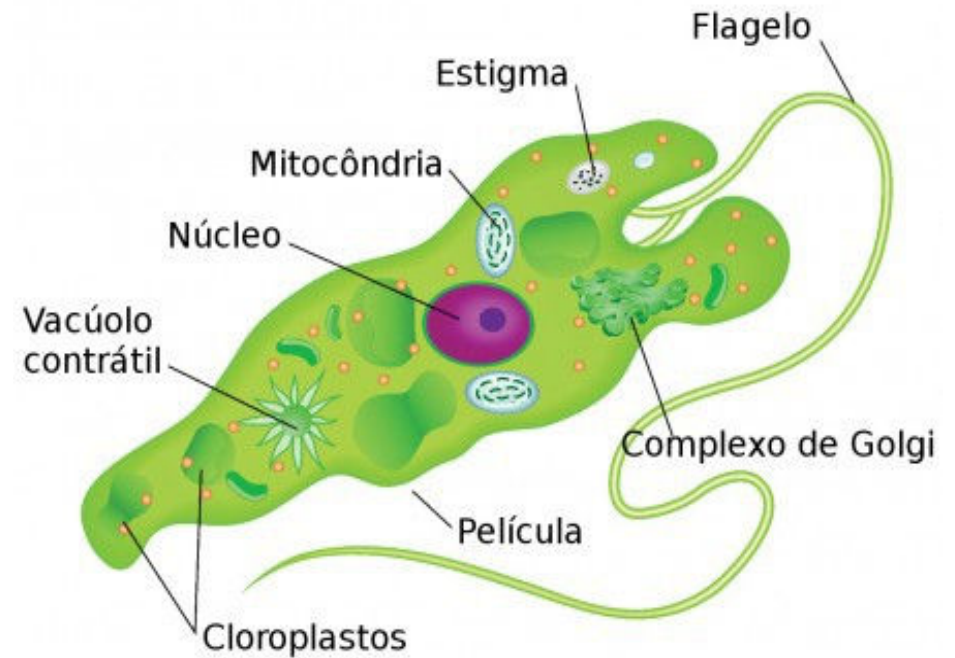
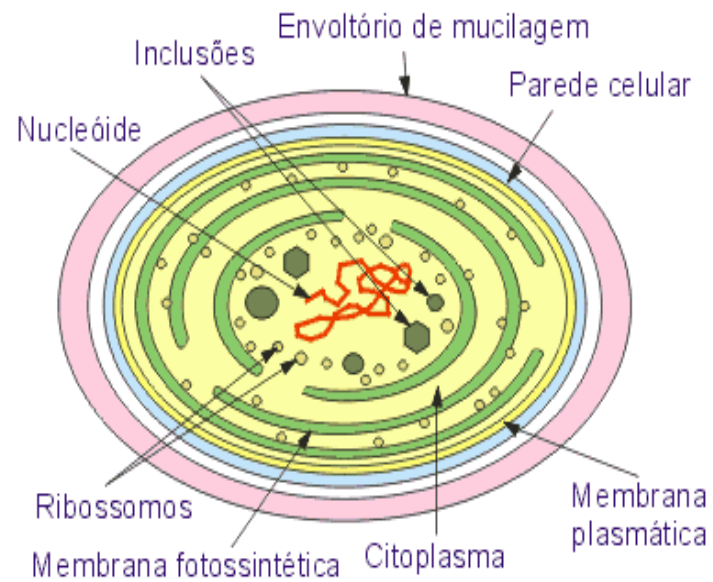


# Critérios Para Classificação Botânica:



# Núcleo:

- Procariontes
- Eucariontes



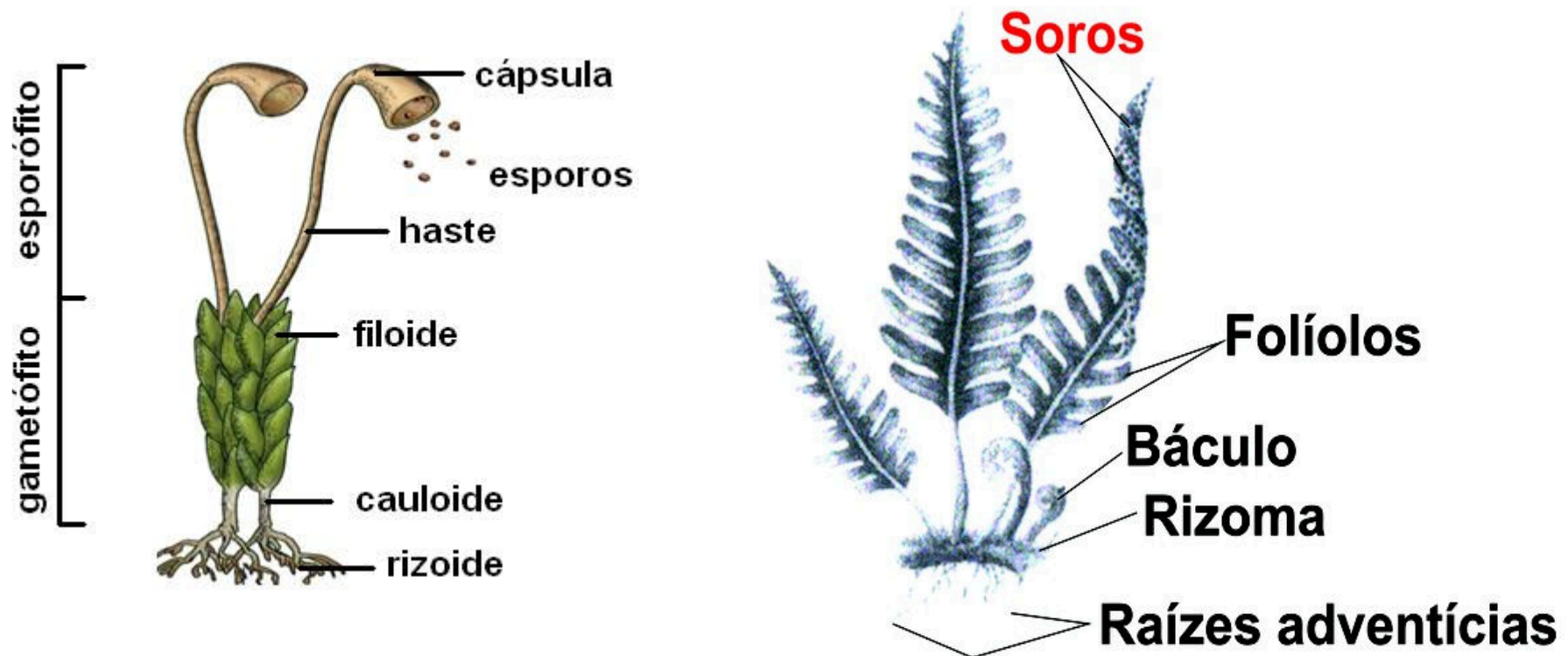
# Corpo do vegetal:

- Talófitas
- Cormófitas



# Vasos Condutores:

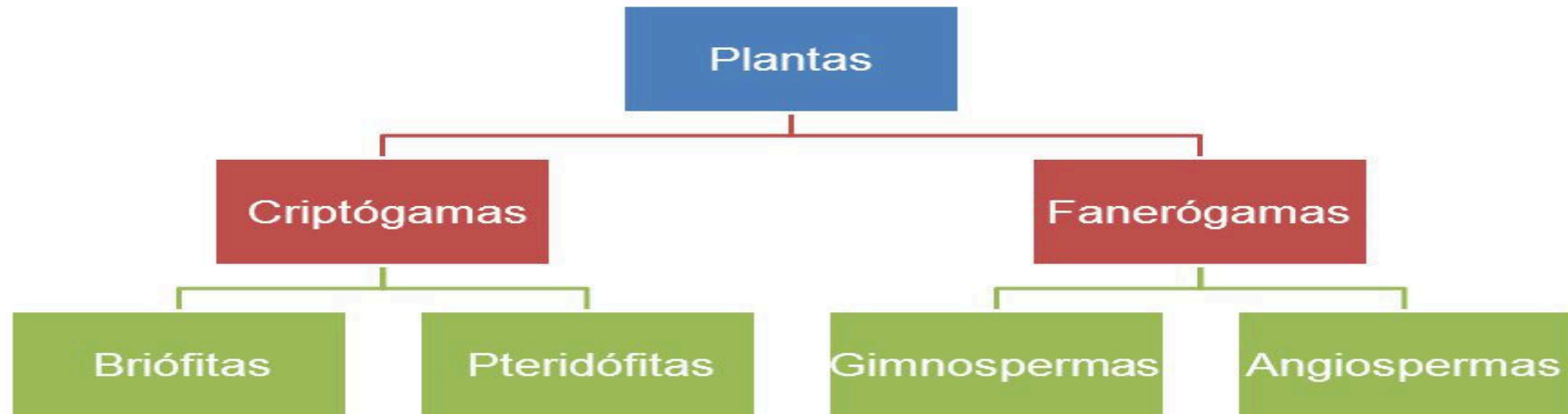
- Avasculares ou atraqueófitas
- Vasculares ou traqueófitas



# Órgãos Reprodutores:

- Criptógamas
- Fanerógamas

## ORGANIZAÇÃO

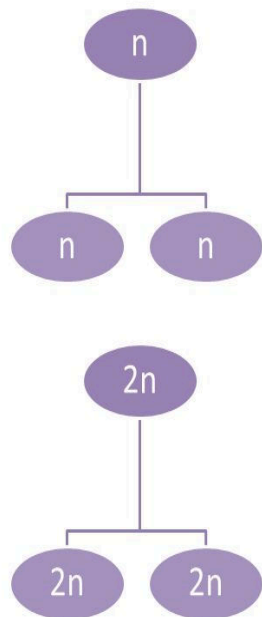


## Complemento:

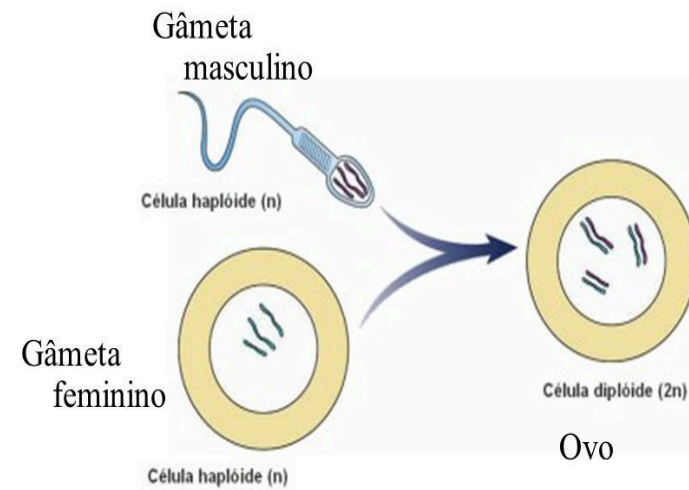
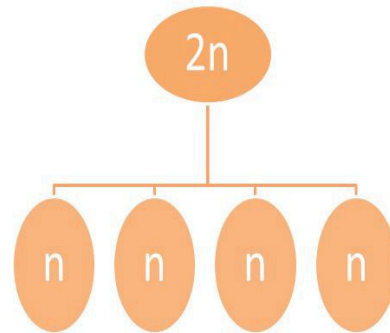
- Embriófitas
- Espermáfitas

# Ciclos Reprodutivos:

## Mitose

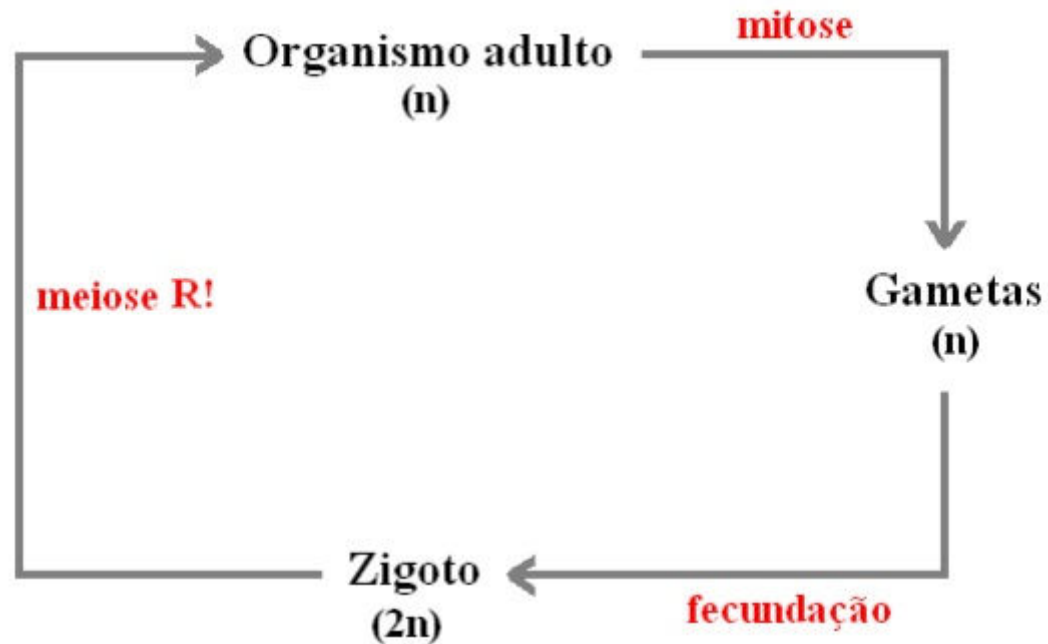


## Meiose



# Ciclo haplobionte (haplôntico):

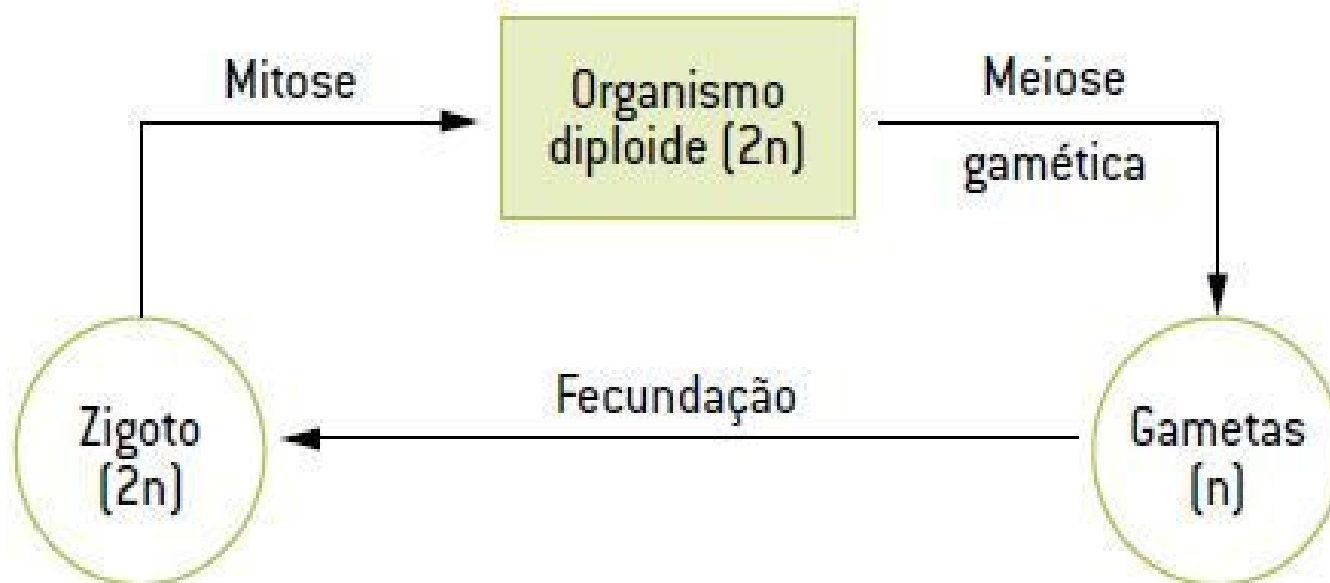
- Adulto haploide.
- Meiose inicial ou zigótica.





# Ciclo Diplobionte (diplôntico):

- Adulto diploide
- Meiose final ou gamética



# Ciclo haplodiplobiontes (haplônticos – diplônticos):

- Adultos: haploide (gametófito) e diploide (esporófito)
- Meiose intermediária ou espórica.



# RELAÇÃO : ESPORÓFITO / GAMETÓFITO

